

Suprascapular Nerve Decompression

Misty Suri MD

Ochsner Sports Medicine Center



History

- 21 y/o RHD female w/ L shoulder pain
- Pain initially started as wrist pain & progressed up to her shoulder X 1 month
- C/o numbness/tingling in L hand/fingers
- Thoracic outlet syndrome ruled out
- Denies any trauma
- PMHx: neg
- PSHx: neg
- Allergies: NKDA
- SHx: denies smoking, Etoh, or illicit drugs

Physical Exam

- Gen: A&O, in NAD
- FF 175, ER at 0--70, ER at 90--90, IR at 90--90
- +scapular winging
- +scapulothoracic crepitation
- +Neers/Hawkins
- +bicipital ttp
- Ant drawer 2+, post 1+, sulcus 2+, sulcus in ER 1+
- +O'Briens test
- +atrophy of supra/infraspinatus
- 5/5 RTC strenght
- Normal C-spine exam
- NVID

Preop Xrays



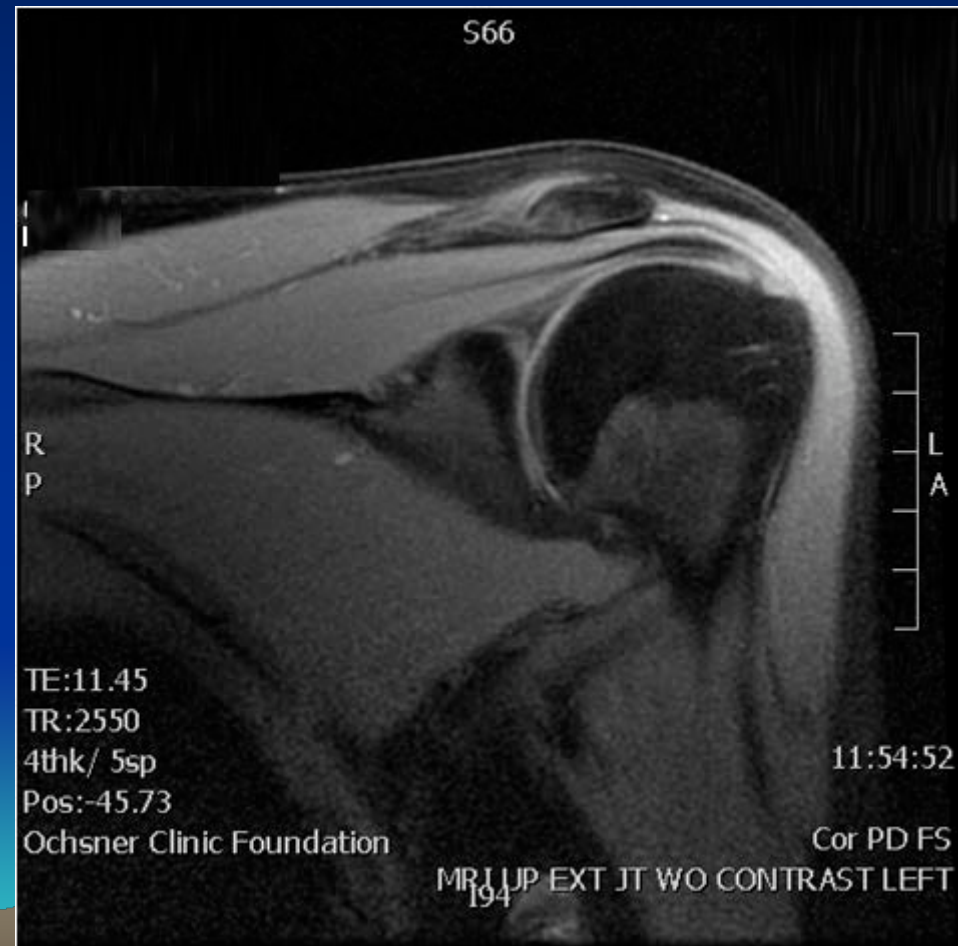
Preop MRI



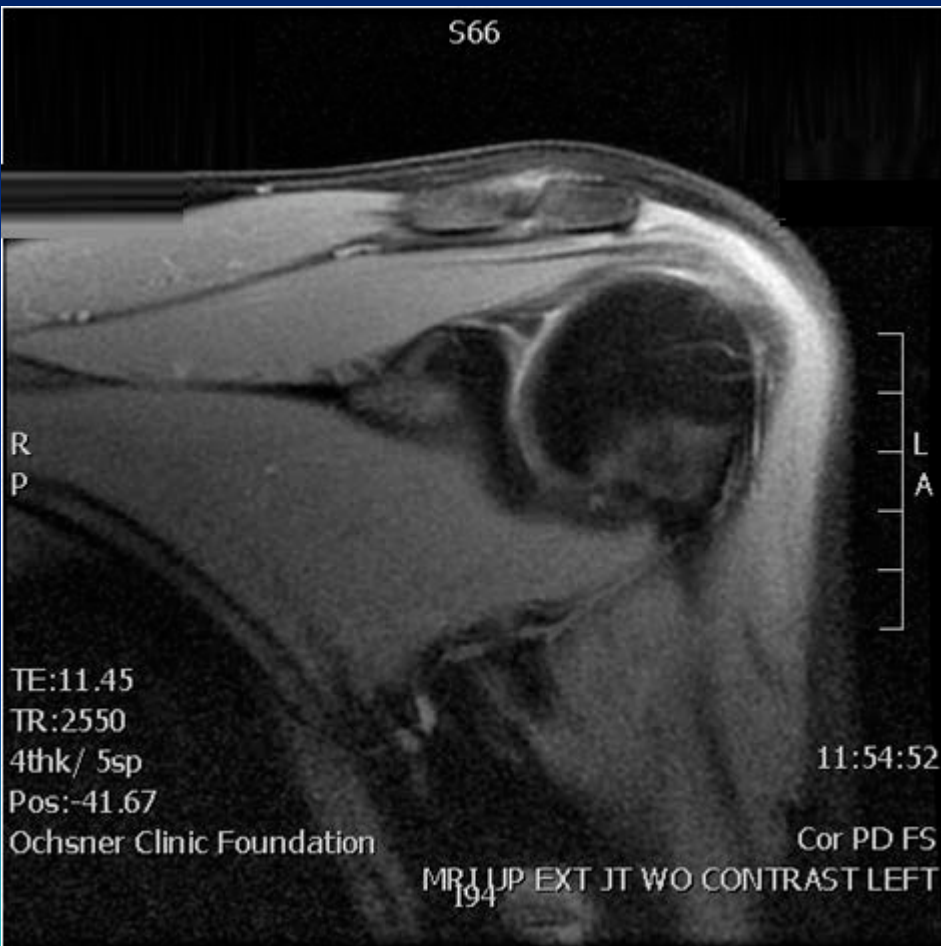
Preop MRI



Preop MRI



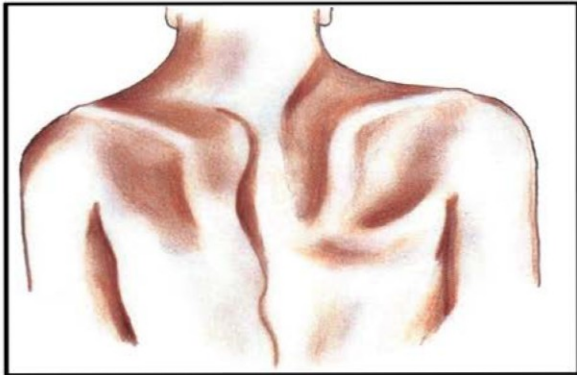
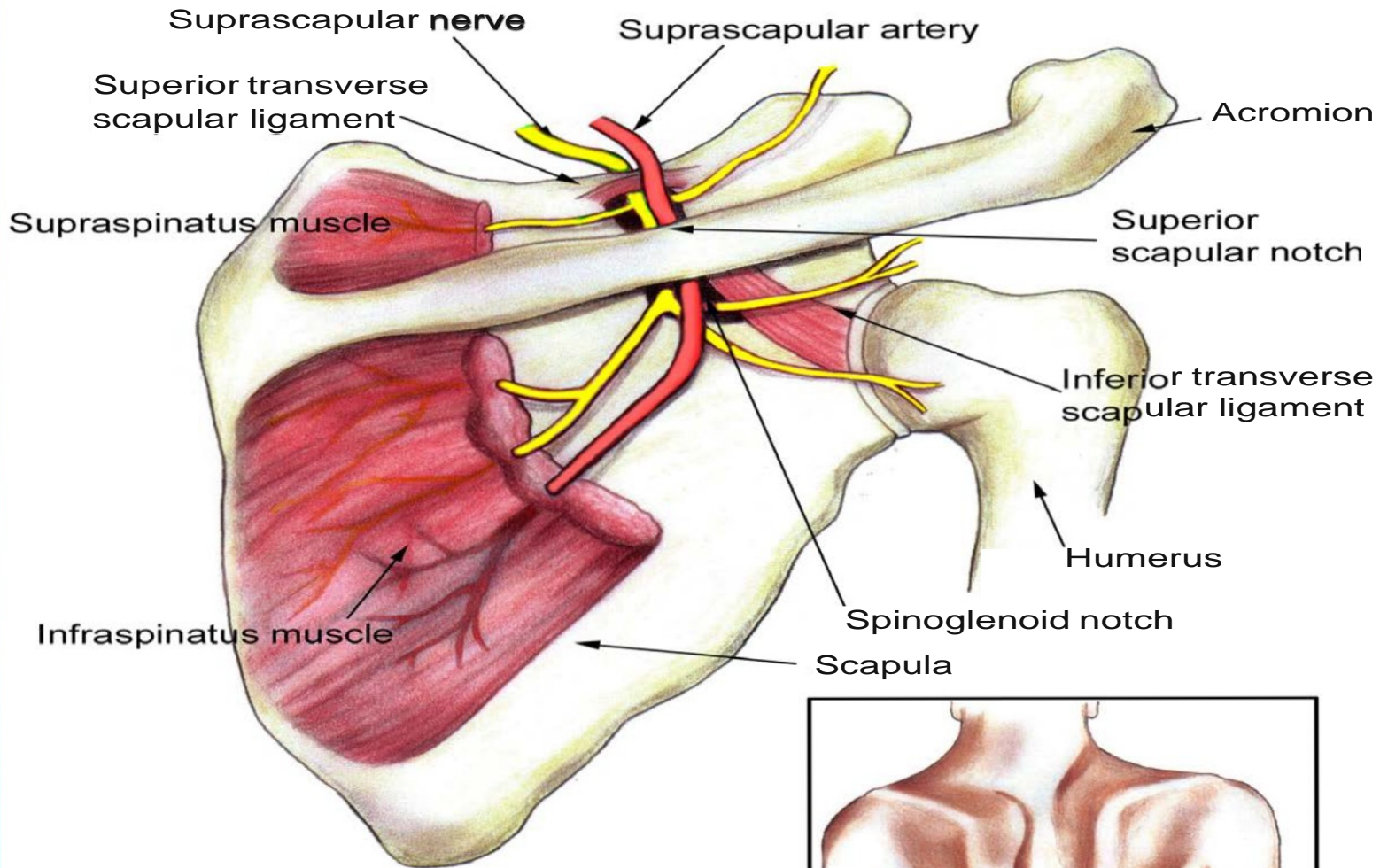
Preop MRI



EMG

- Active denervation of supraspinatus and infraspinatus muscles
- C/w suprascapular nerve compression neuropathy

Anatomy

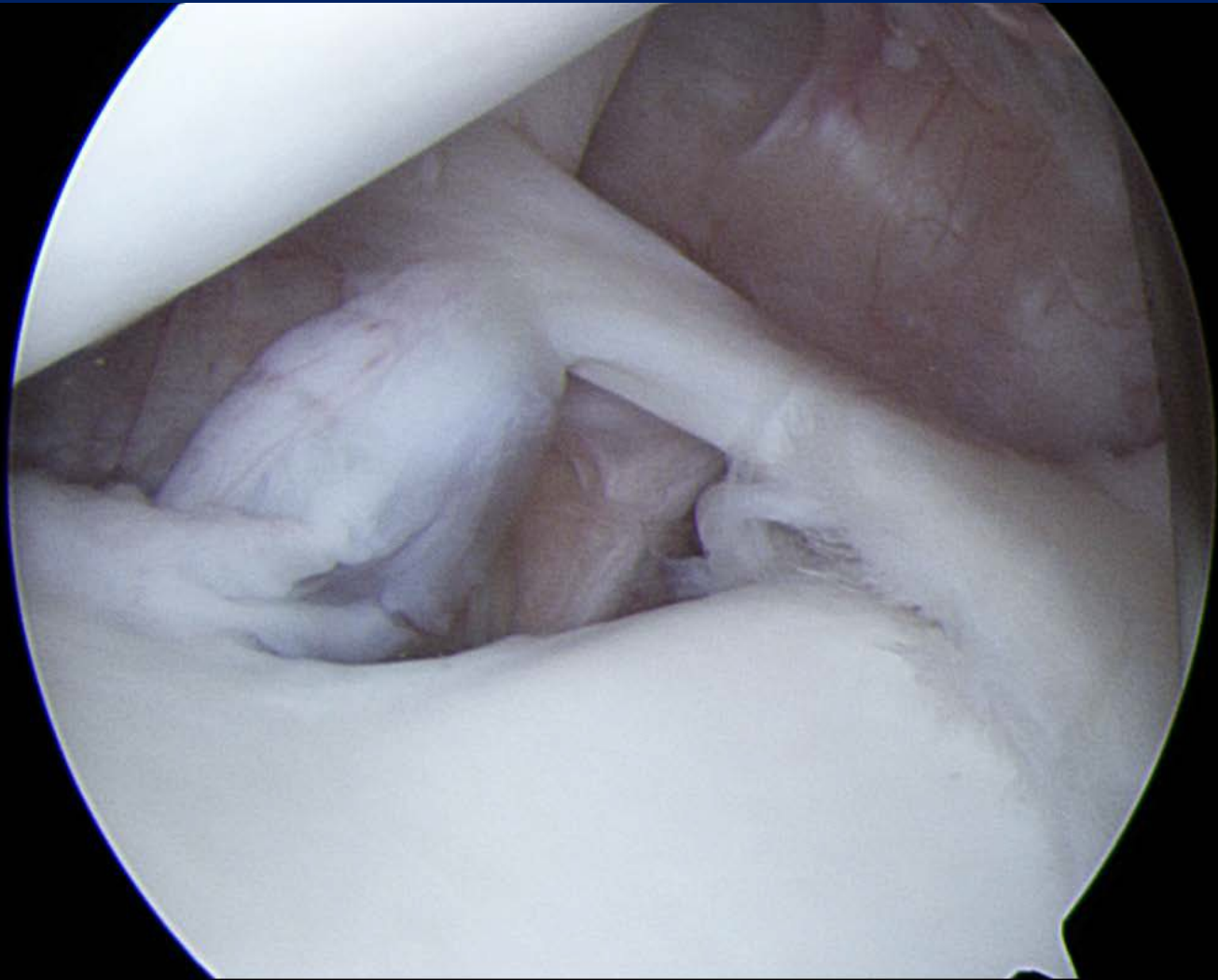


What Was done

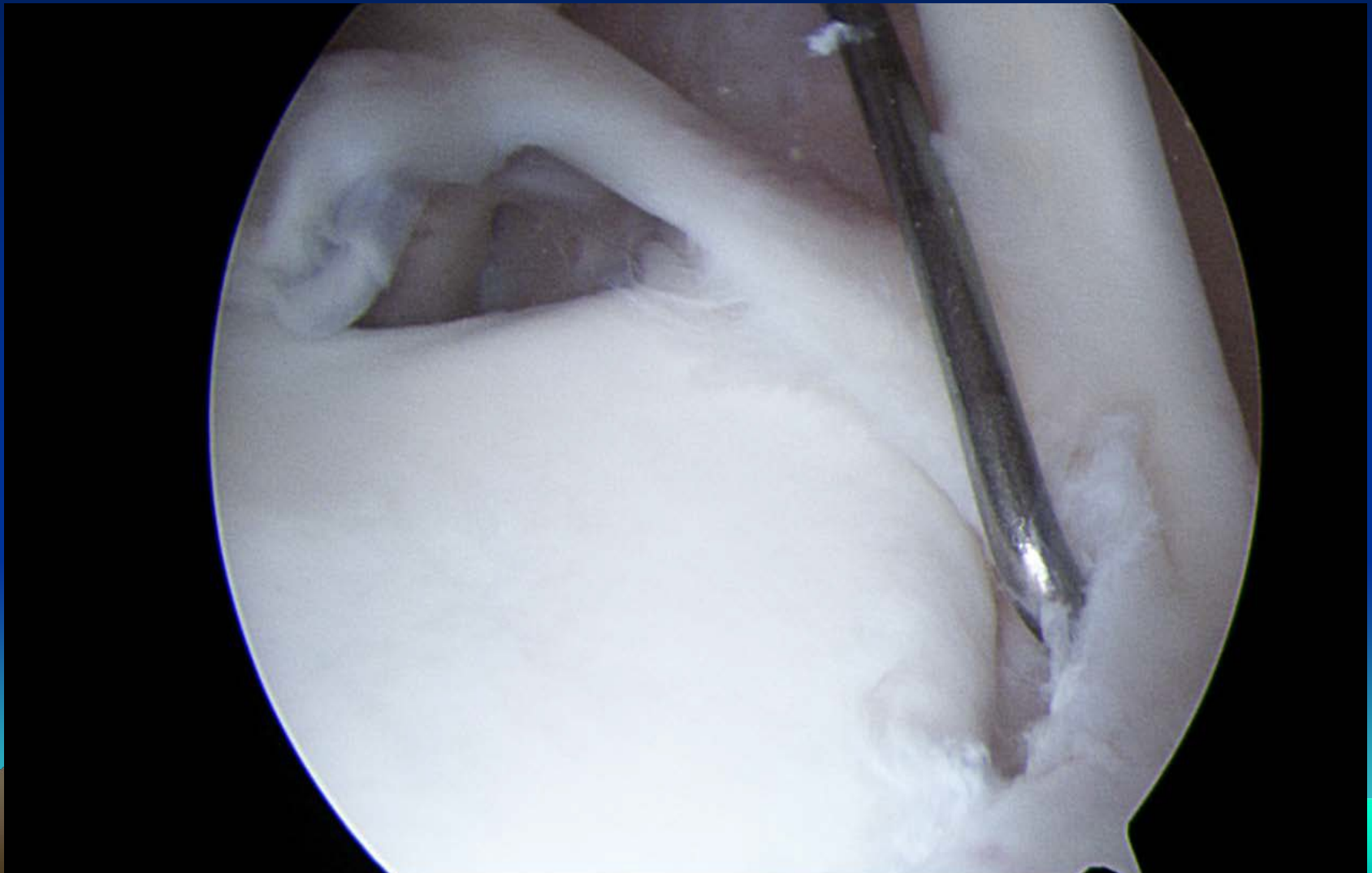
- SLAP Repair w/ RI closure
- Suprascapular nerve decompression at suprascapular notch
- Subacromial bursectomy



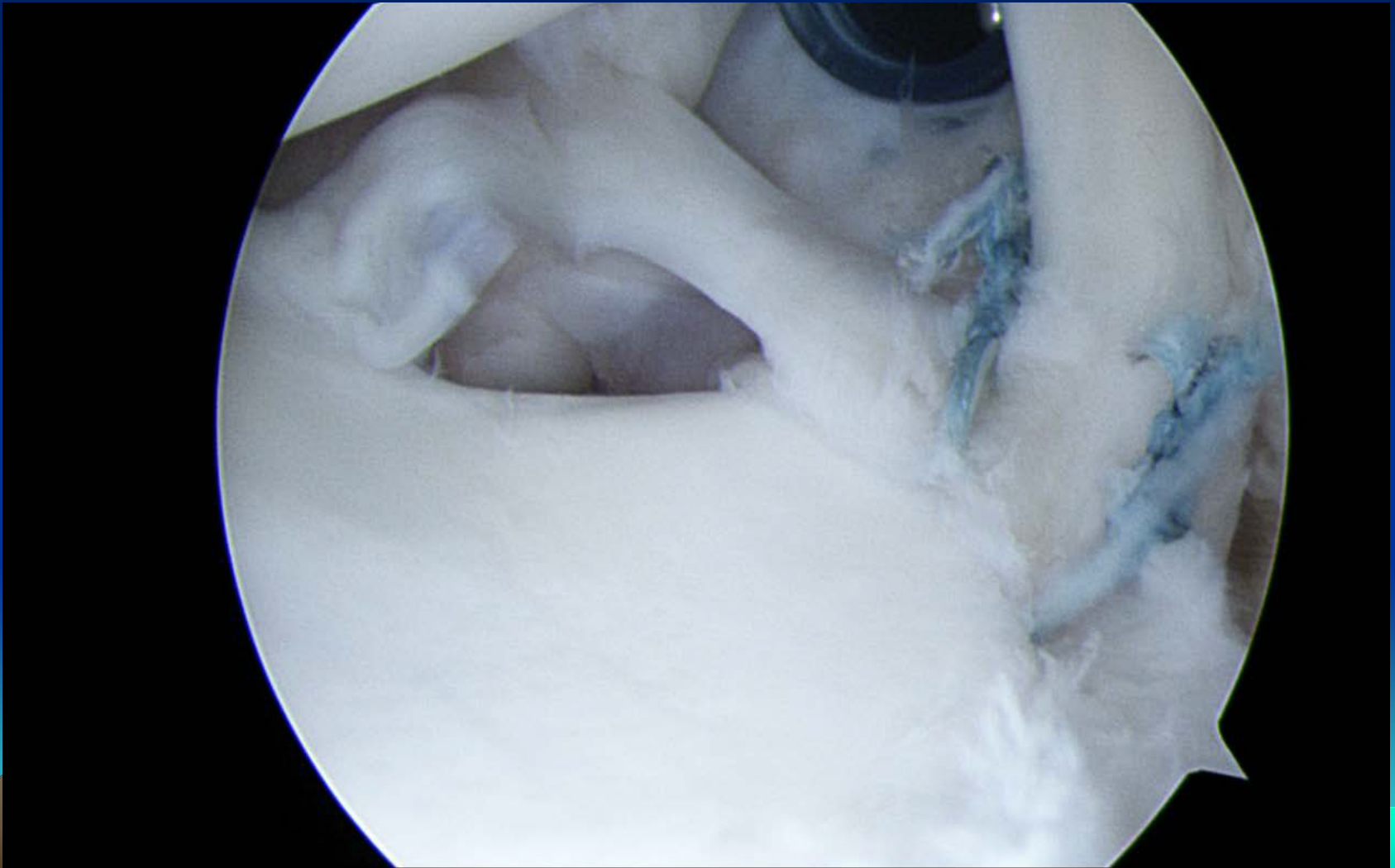
Arthroscopy Pics



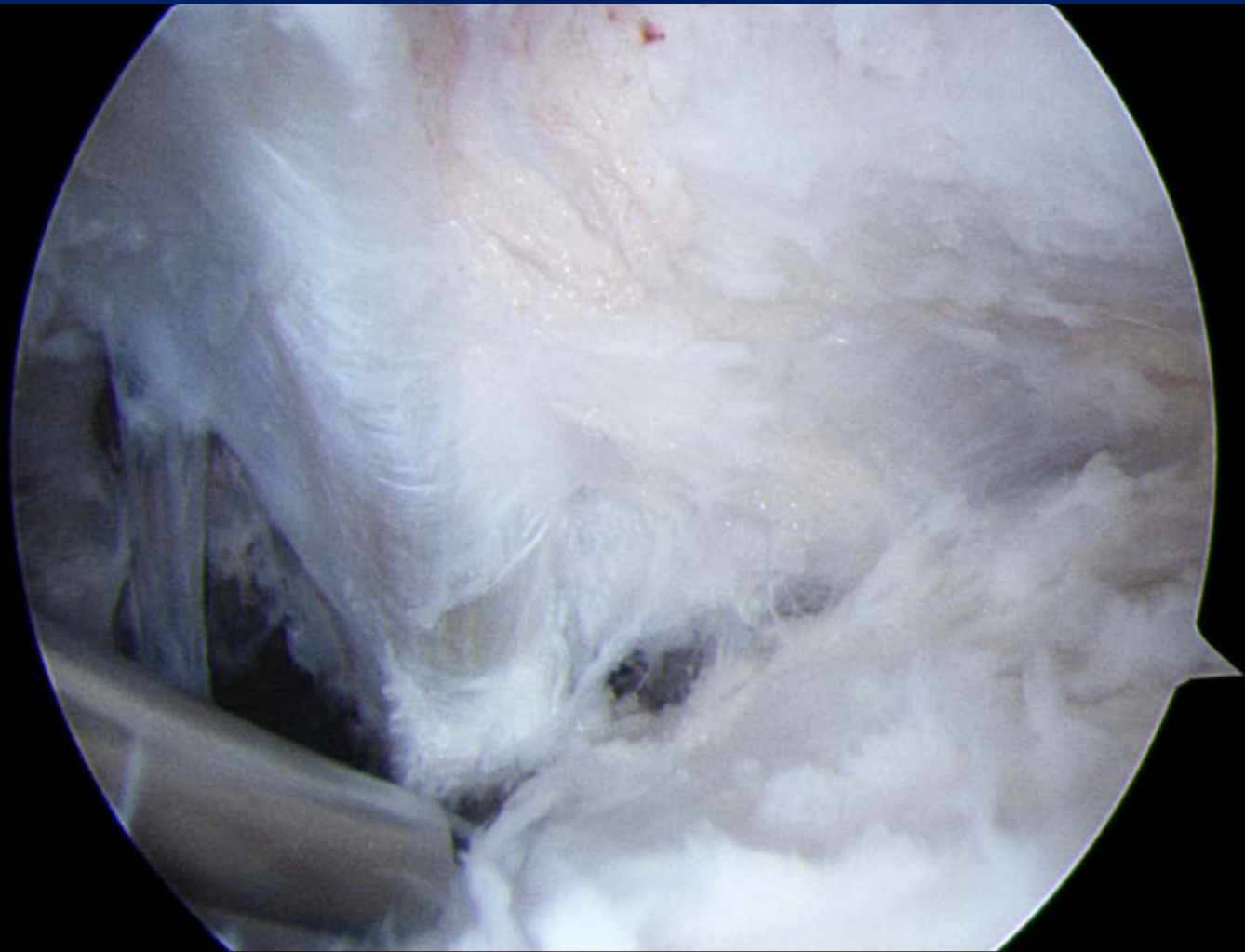
Arthroscopy Pics



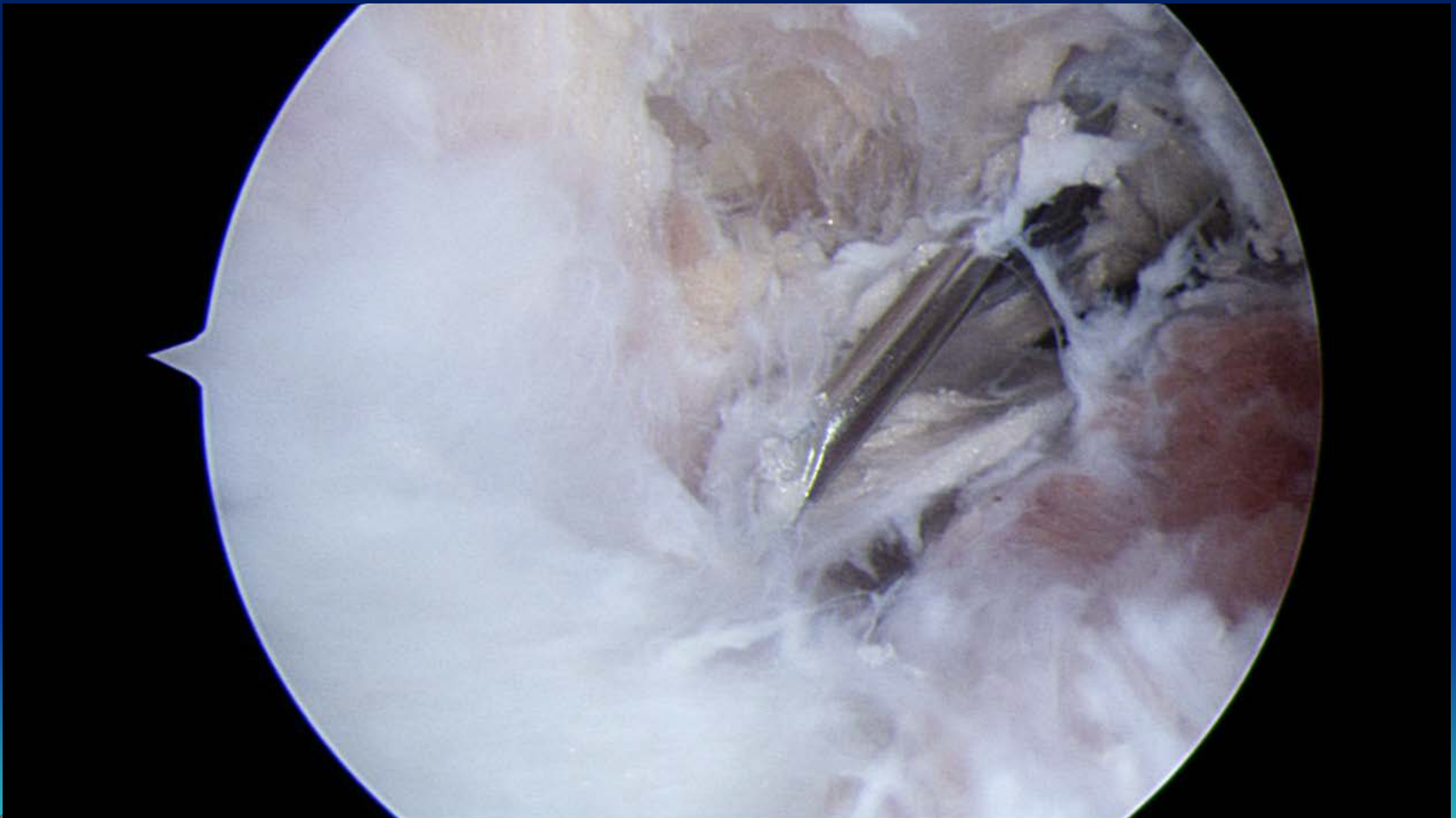
Arthroscopy Pics



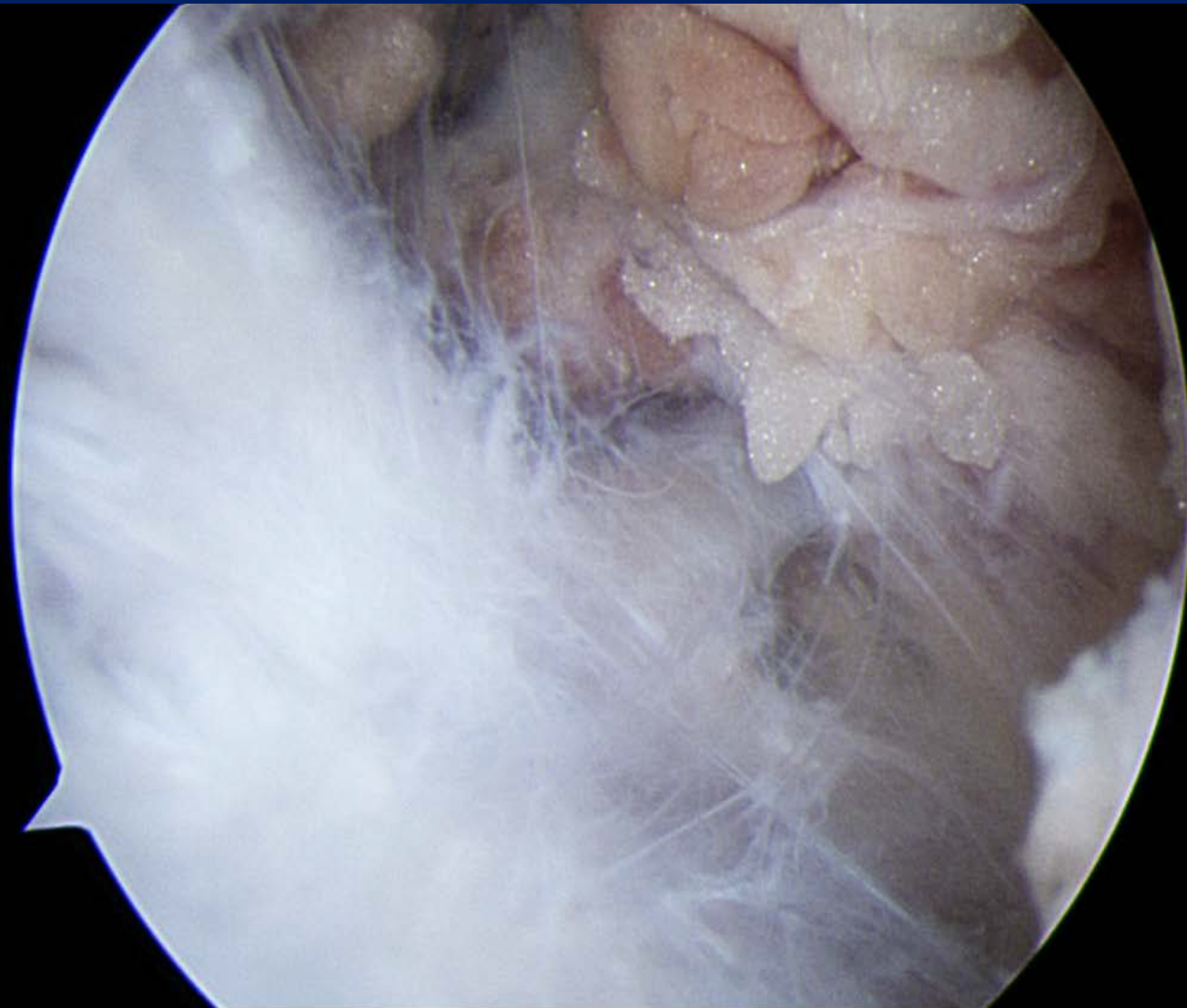
Arthroscopy Pics



Arthroscopy Pics



Arthroscopy Pics



Arthroscopy Pics



Arthroscopy Pics



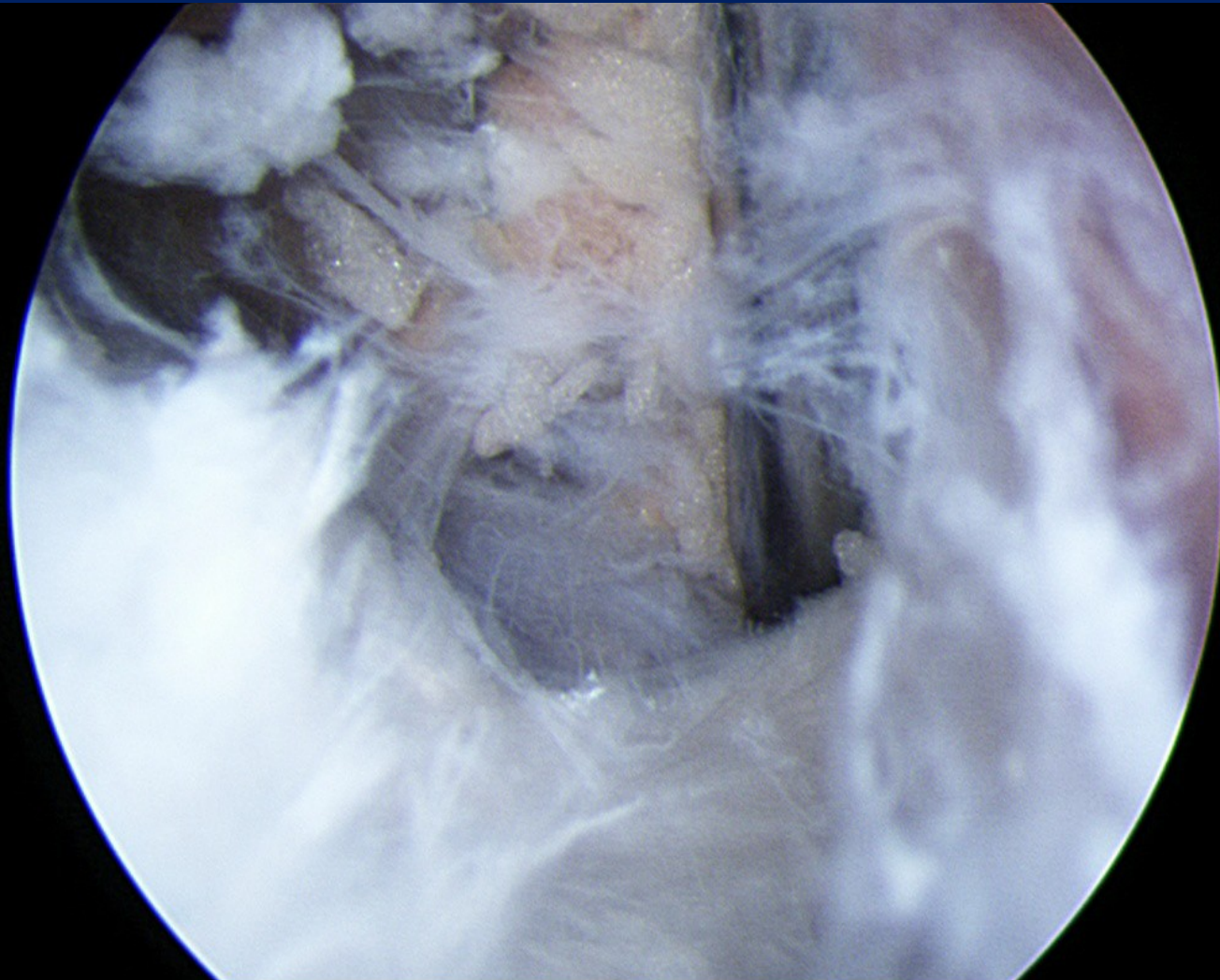
Arthroscopy Pics



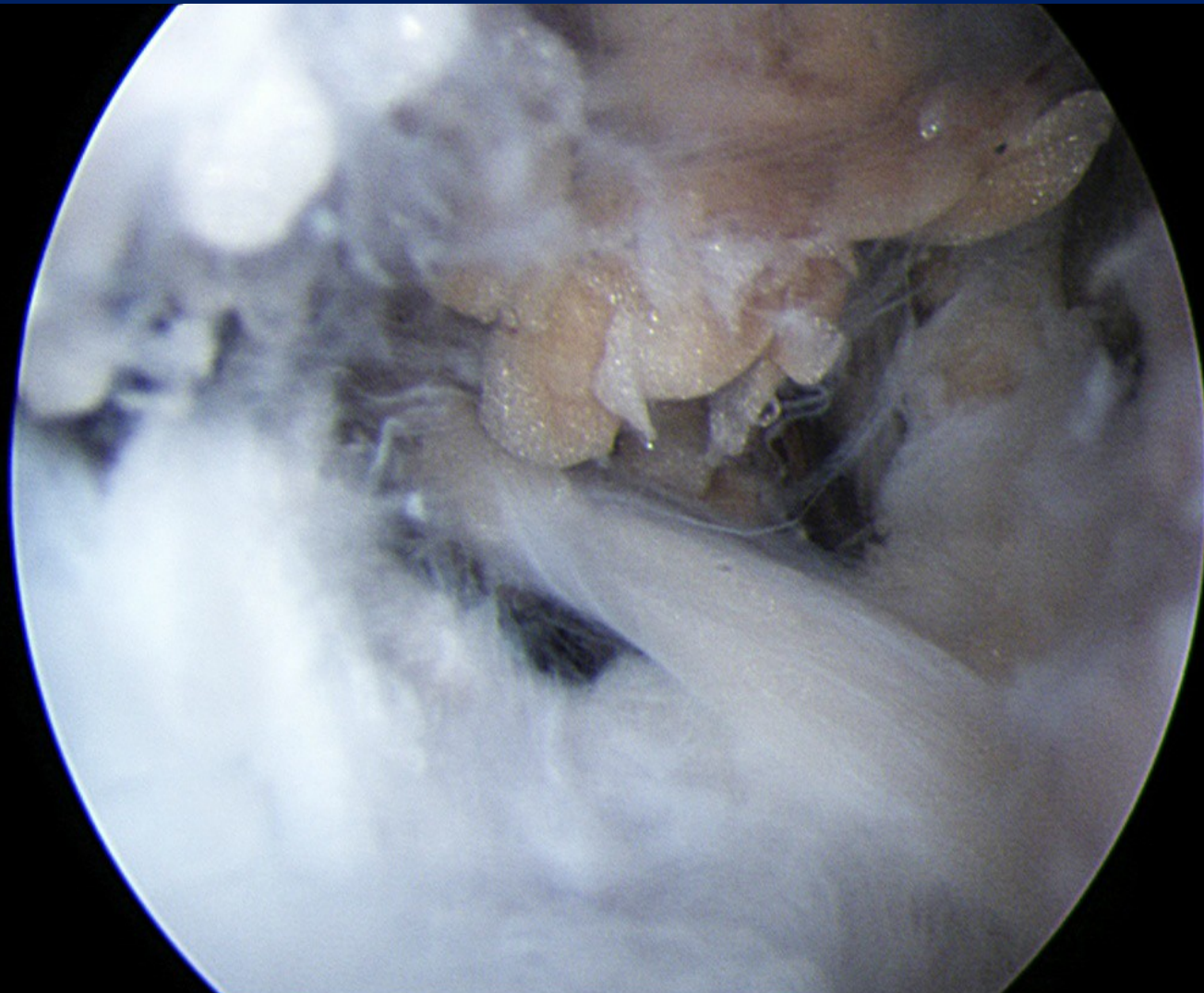
Arthroscopy Pics



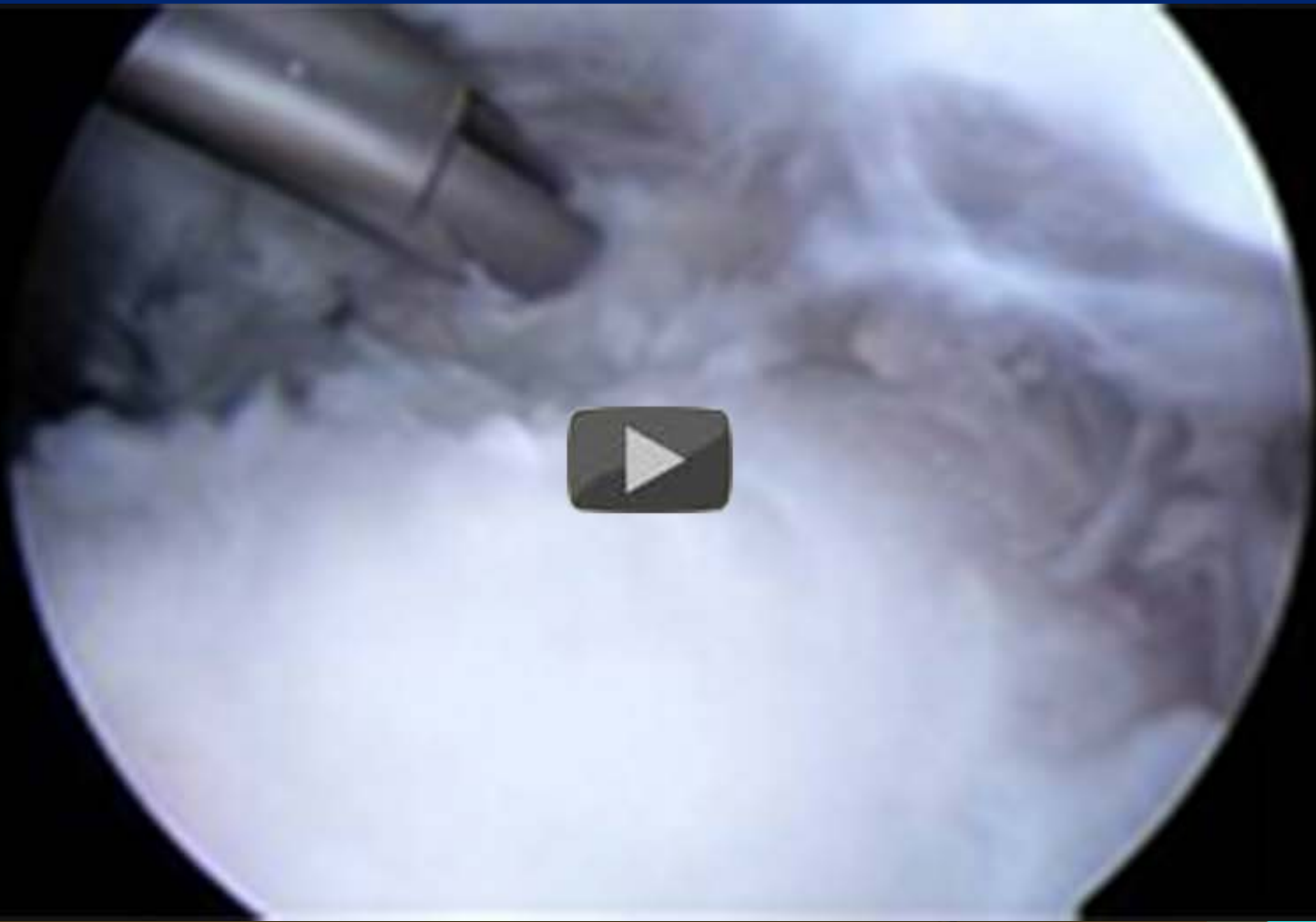
Arthroscopy Pics



Arthroscopy Pics



Arthroscopy Video



Arthroscopy Video



Arthroscopy Video



Arthroscopy Video



Arthroscopy Video



Arthroscopy Video

